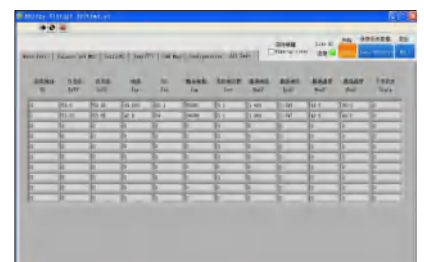
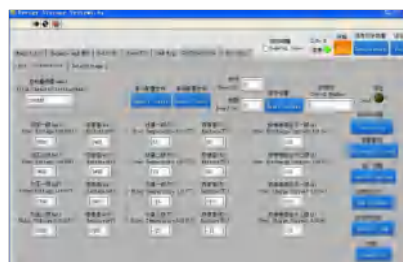


20.48KWH Battery Energy Storage System

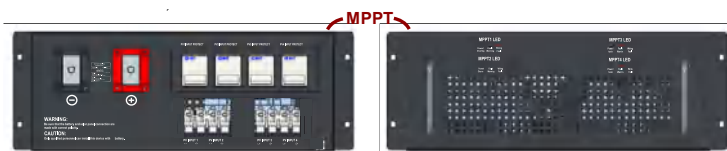
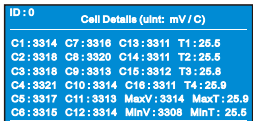
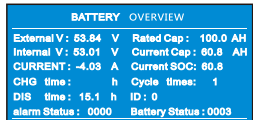
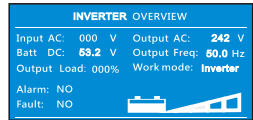
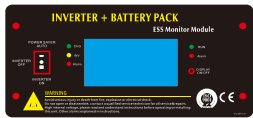
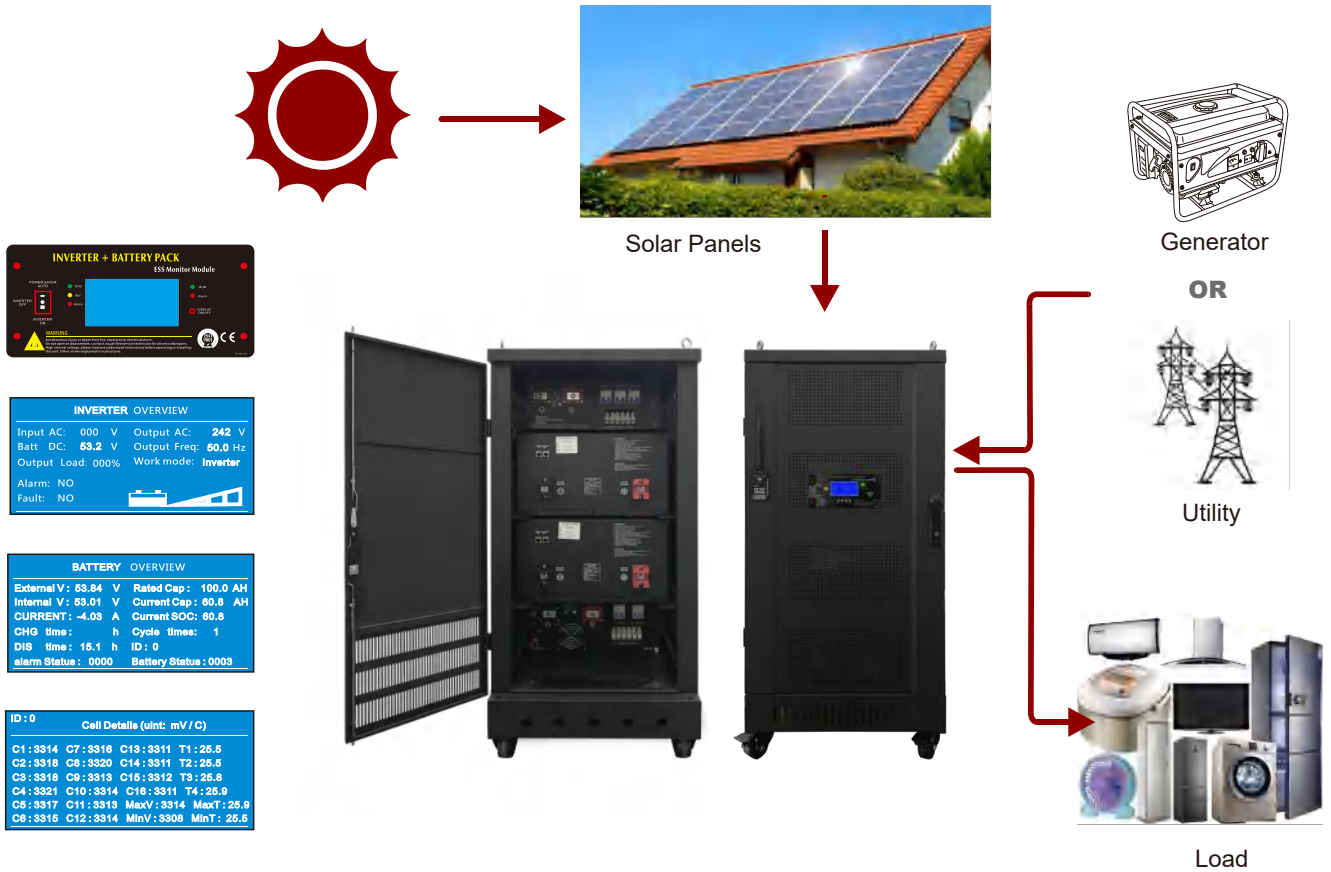
ESS10048E400P4

20.48KWH Battery
 10 KW Inverter & AC Charger
 200 A MPPT Solar Charger



Product Application

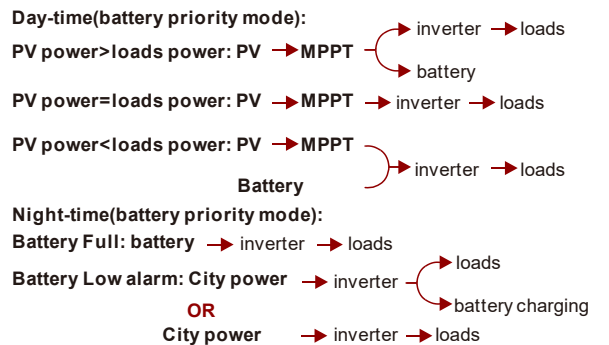
Energy storage in power system including solar panels, inverter (for AC and DC conversion), and provide backup power for the main electrical backup lines. Household electricity demand different choice of different components.



WIFI MODULE

Real-time viewing

Loads Power Source



● BASIC Specification

Battery		Description
Normal specification		
1	Rated Voltage	51.2V
2	Rated Capacity	400Ah
3	Rated Energy	20.48KWH
4	Battery Configuration	10.24KWH(16S2P) *2PCS
5	Battery Cell	3.2V100AH 64PCS
Standard Charge		
1	Operation temperature range @charging	0~45°C
2	Rated charge voltage	55.2±0.4V
3	Max charge voltage	56.8±0.4V
4	Overcharge protection	58.4±0.4V
5	Allowed MAX charge current(Total)	220A withstand 30s (every pack 55A)
6	Peak charge current(Total)	240A withstand 5s (every pack 60A)
7	Rated charge current(Total)	200A (every pack 50A)
8	Recommend charge current(Total)	<200A
Standard discharge		
1	Operation temperature range @discharging	-20~60°C
2	Output Voltage Range	40~56Vdc
3	Recommend Working Range	46~54Vdc
4	Discharge Cut-off voltage	40V
5	Allowed MAX discharge current(Total)	440A withstand 30s (every pack 110A)
6	Peak discharge current(Total)	480A withstand 5s (every pack 120A)
7	Rated discharge current(Total)	400A (every pack 200A)
8	Recommend discharge current(Total)	<400A

BASIC Specification

Communication				
1	RS485	For LCD remote		
2	CAN	PC control and monitor		
Inverter (built-in)		Description		
Normal specification				
1	Rated Power	10KW		
2	Output Waveform	Pure Sine Wave/Same as input (Bypass Mode)		
3	Output Voltage	240Vac(H-H)/120Vac(H-N) $\pm 10\%$ RMS		
4	Output Frequency	50 or 60 ± 0.3 Hz (Inverter mode by sw4 setting)		
5	Typical Transfer Time	4-6ms typical,10ms(Max)		
6	THD	< 3%(Rated voltage full R load)		
7	AC Input Range	184-253Vac (UPS mode) or 140-270Vac (GEN mode)		
8	Customized AC Charger	Battery type selector position 9, special design for LFP, make the battery cycle life Maximization		
9	MAX AC Charge Current	90A		
10	Battery priority Function	Setting by SW5 on position 1 (inverter mode valid), AC automatic come in when battery voltage low alarm at 48Vdc or 50Vdc		
11	AC Bypass without charging	Battery type selector position 0		
MPPT (built-in)		Description		
Normal specification				
1	PV POWER	3.0KW*4		
2	PV Input Voltage	60-145Vdc		
3	MPPT Charging Voltage	56.0Vdc (Fast charging)/54Vdc (Float charging)		
4	MPPT Output Current	50A*4		
Model	Configuration			
ESS1004	MPPT	INVERTER	BATTERY	Energy
8E400P4	200A(50A*4)	10KW	400AH(200AH*2)	20.48kwh
Mechanical Characteristics				
ESS1004	Dimension H*W*D	Shipping H*W*D	Weight(N.W.)	Weight(G.W.)
8E400P4	1110*560*960mm	1290*700*1050mm	350KG	370KG

